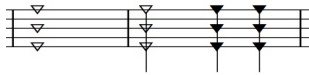


Granular Quartet

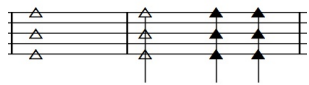
for four JoyStyx

Performance Notes

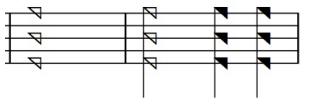
This is a performance score, a tablature in which the written notes represent performance instructions rather than pitch content. The five staff lines each represent a joystick, notes written on the bottom line indicate actions performed on the thumb's joystick and those on the top line performed on the pinky's joystick. All actions should be slow and smooth.



Back: From the joystick's current position, gradually pull the joystick back toward the performer. It should take the entire note duration to reach full back extension.



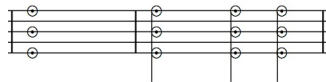
Forward: From the joystick's current position, gradually push the joystick forward away from the performer. It should take the entire note duration to reach full forward extension.



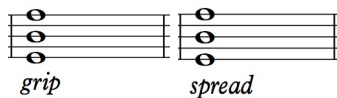
Left: From the joystick's current position, gradually slide the joystick to the left. It should take the entire note duration to reach full left extension.



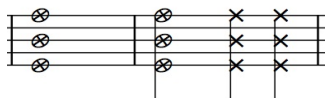
Right: From the joystick's current position, gradually slide the joystick to the right. It should take the entire note duration to reach full right extension.



Center: From the joystick's current position, gradually release the joystick to the center position. It should take the entire note duration to reach the center.



Grip/Spread: For grip, gradually squeeze the indicated joysticks toward the center of the performer's palm. For spread, gradually press the indicated joysticks apart away from the center of the performer's palm.



Button Press: Press the indicated joysticks down until they click. Hold them for the full note duration, then release.

When instructed to "wiggle", rapidly move the joystick in small random motions while the button is pressed. The motions should be small, not moving to full extension in any direction. This varies the duration of the delay lines, resulting in a gurgling effect.

Granular Quartet

♩ = 50ca

Musical score for the first system, measures 1-8. The instruments are Flute, Oboe, Bass Clarinet, and Bassoon. The Flute part features a melodic line with a slur over measures 5-6 and a fermata in measure 7. The Bass Clarinet part has a similar melodic line with a slur over measures 3-4 and a fermata in measure 5. The Oboe and Bassoon parts consist of rhythmic patterns of eighth notes.

10

Musical score for the second system, measures 10-17. The Flute part has a melodic line with a slur over measures 11-12 and a fermata in measure 13, with a *grip* instruction below. The Bassoon part has a melodic line with a slur over measures 11-12 and a fermata in measure 13, with a *grip* instruction below. The Oboe and Bass Clarinet parts have rhythmic patterns. The *spread* instruction appears in the Flute part in measure 15.

18

Musical score for the third system, measures 18-25. The Flute part has a melodic line with a slur over measures 19-20 and a fermata in measure 21. The Bassoon part has a melodic line with a slur over measures 19-20 and a fermata in measure 21, with a *spread* instruction below. The Oboe part has a melodic line with a slur over measures 19-20 and a fermata in measure 21, with a *grip* instruction below. The Bass Clarinet part has a melodic line with a slur over measures 19-20 and a fermata in measure 21, with a *Slow Circles* instruction below.

26

Fl. *Slow Circles*

Ob. *Slow Circles* *accel.*

B. Cl. *accel.*

Bsn. *accel.* *Slow Circles*

Detailed description: This system covers measures 26 to 34. The Flute part features a melodic line with 'Slow Circles' markings. The Oboe part has a similar melodic line with 'accel.' markings. The Bass Clarinet and Bassoon parts provide harmonic support with 'accel.' markings. A dashed line in the Oboe part indicates a breath mark.

35

♩ = 80ca

Fl.

Ob.

B. Cl.

Bsn.

Detailed description: This system covers measures 35 to 42. The tempo is marked as quarter note = 80ca. The Flute part continues its melodic line. The Oboe part has a melodic line with some rests. The Bass Clarinet and Bassoon parts provide harmonic support.

43

Fl.

Ob. *wiggle*

B. Cl.

Bsn.

Detailed description: This system covers measures 43 to 50. The Flute part has a melodic line. The Oboe part has a melodic line with a 'wiggle' marking. The Bass Clarinet and Bassoon parts provide harmonic support.

49

Fl.
Ob.
B. Cl.
Bsn.

wiggle

This system contains measures 49 through 54. The Flute part has a 'wiggle' annotation in measure 54. The Bassoon part has a 'wiggle' annotation in measure 50. The woodwind parts include Flute, Oboe, Bass Clarinet, and Bassoon.

55

Fl.
Ob.
B. Cl.
Bsn.

wiggle

This system contains measures 55 through 60. The Oboe part has a 'wiggle' annotation in measure 58. The Bass Clarinet part has a 'wiggle' annotation in measure 56. The woodwind parts include Flute, Oboe, Bass Clarinet, and Bassoon.

61

Fl.
Ob.
B. Cl.
Bsn.

wiggle

This system contains measures 61 through 66. The Flute part has a 'wiggle' annotation in measure 64. The Oboe part has a 'wiggle' annotation in measure 62. The Bassoon part has a 'wiggle' annotation in measure 65. The woodwind parts include Flute, Oboe, Bass Clarinet, and Bassoon.

67

Fl.
Ob.
B. Cl.
Bsn.

wiggle

Detailed description: This system covers measures 67 to 72. The Flute (Fl.) part has rests in measures 67-70 and then plays notes in 71 and 72. The Oboe (Ob.) part has rests in 67-70 and then plays notes in 71 and 72. The Bass Clarinet (B. Cl.) part has notes in 67-70, a 'wiggle' instruction in 71, and notes in 72. The Bassoon (Bsn.) part has notes in 67-70 and a long note in 72.

73

Fl.
Ob.
B. Cl.
Bsn.

wiggle

wiggle

wiggle

Detailed description: This system covers measures 73 to 78. The Flute (Fl.) part has notes in 73-76, a 'wiggle' instruction in 77, and notes in 78. The Oboe (Ob.) part has notes in 73-76, a 'wiggle' instruction in 77, and notes in 78. The Bass Clarinet (B. Cl.) part has notes in 73-76 and notes in 78. The Bassoon (Bsn.) part has notes in 73-76 and notes in 78. 'wiggle' instructions are present in measures 74, 77, and 78.

79

Fl.
Ob.
B. Cl.
Bsn.

rit.

Slow Circles

wiggle

wiggle

wiggle

wiggle

rit.

rit.

Detailed description: This system covers measures 79 to 84. The Flute (Fl.) part has notes in 79-82, a 'rit.' instruction in 83, and notes in 84. The Oboe (Ob.) part has notes in 79-82, a 'wiggle' instruction in 83, and 'Slow Circles' in 84. The Bass Clarinet (B. Cl.) part has notes in 79-82, a 'wiggle' instruction in 83, and notes in 84. The Bassoon (Bsn.) part has notes in 79-82, a 'wiggle' instruction in 83, and notes in 84. 'rit.' instructions are present in measures 80, 83, and 84. 'Slow Circles' is present in measure 84. 'wiggle' instructions are present in measures 81, 83, and 84.

86 $\text{♩} = 50\text{ca}$

Fl.
Ob.
B. Cl.
Bsn.

wiggle

grip

Detailed description: This system covers measures 86 to 94. It features four staves: Flute (Fl.), Oboe (Ob.), Bass Clarinet (B. Cl.), and Bassoon (Bsn.). The tempo is marked as quarter note = 50ca. The Flute part begins with a 'wiggle' instruction. The Oboe part has a 'grip' instruction. The Bass Clarinet part also has a 'grip' instruction. The music consists of complex, multi-measure rests and melodic lines with various articulations like slurs and accents.

95

Fl.
Ob.
B. Cl.
Bsn.

spread

grip

grip

spread

Detailed description: This system covers measures 95 to 101. It features the same four staves as the previous system. The Oboe part has a 'spread' instruction. The Flute part has a 'grip' instruction. The Bass Clarinet part has a 'grip' instruction. The Bassoon part has a 'spread' instruction. The music continues with complex, multi-measure rests and melodic lines.

102

Fl.
Ob.
B. Cl.
Bsn.

spread

spread

spread

spread

Detailed description: This system covers measures 102 to 108. It features the same four staves. The Flute part has a 'spread' instruction. The Oboe part has a 'spread' instruction. The Bass Clarinet part has a 'spread' instruction. The Bassoon part has a 'spread' instruction. The music continues with complex, multi-measure rests and melodic lines.